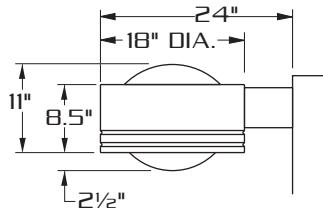
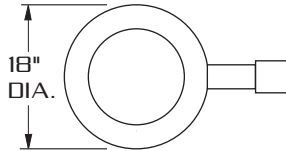


# RVL18

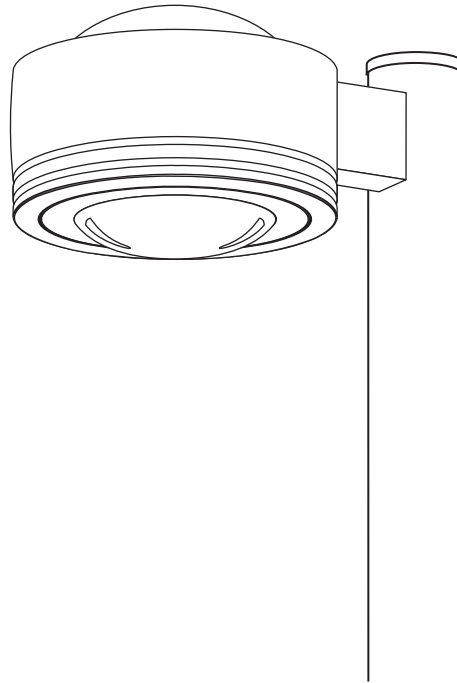
[175 WATT MAX.]



**SIDE VIEW**



**TOP VIEW**



E.P.A.- 1.24



## SPECIFICATIONS

**HOUSING:** HEAVY WALL SPUN ALUMINUM CONSTRUCTION WITH INTEGRAL DOMED TOP. TWIN FLUTES HAVE BEEN INTEGRATED WITH HOUSING TO ADD AESTHETIC VALUE AND TO PROVIDE FOR MULTI COLORED BANDS TO SIGNATURIZE INSTALLATION.

**LENS ASS'Y:** ONE PIECE HINGED HEAVY GAUGE DIE FORMED ALUMINUM DOOR FRAME SURROUNDS 3/16" CLEAR CONVEX GLASS LENS. GLASS IS SEALED TO DOOR WITH HIGH TEMPERATURE SILICONE SEAL. CAPTIVE THUMB SCREW DISENGAGES LENS ASSEMBLY AND ACTIVATES ACCUHINGE™ HINGE TO ALLOW LENS ASSEMBLY TO HINGE AWAY FROM HOUSING FOR LUMINAIRE ACCESS WITHOUT THE USE OF TOOLS.

**OPTICS:** COMPUTER DESIGNED ONE PIECE SEGMENTED SPECULAR REFLECTOR COMBINES WITH CLEAR CONVEX LENS TO PRODUCE A HIGHLY EFFICIENT WIDE SYMMETRIC LIGHT DISTRIBUTION WITH OUTSTANDING UNIFORMITY.

**GASKETING:** CLOSED CELL EPDM GASKETING COMPRESSED BETWEEN DOOR AND HOUSING WORKS IN COMBINATION WITH ACCUHINGE™ HINGE TO PRESSURE SEAL OPTICAL CHAMBER.

**LAMP HOLDER:** MOGUL BASE PORCELAIN.

**LAMP:** (BY OTHERS)

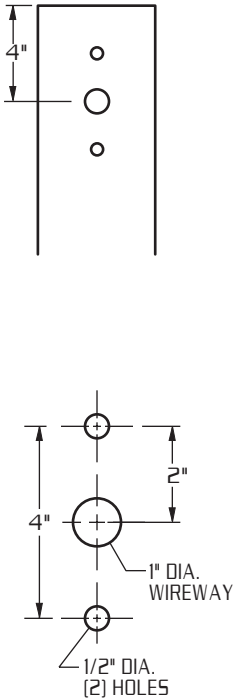
**BALLAST:** H.P.F./C.W.A. AUTOTRANSFORMER. -20° STARTING TEMPERATURE.

**ARM:** 3"X5"X6" LONG HEAVY WALL EXTRUDED ALUMINUM. ARM IS SECURED TO HOUSING AND TO POLE WITH STAINLESS STEEL RODS.

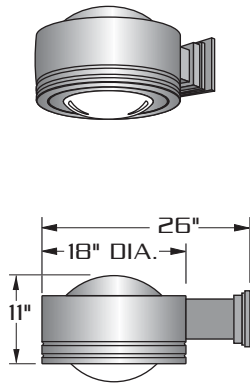
**FINISH:** POLYESTER POWDER COAT-STATE OF THE ART 20 PSI PRESSURE POWER WASH AT 140° TEMPERATURE INCORPORATES FOUR STEP IRON PHOSPHATE PROCESS TO CLEANSE AND PRETREAT THE METAL SURFACE FOR MAXIMUM PAINT ADHESION. ELECTROSTATICALLY APPLIED TEXTURED POLYESTER POWDER TOP COAT IS BAKED AT 400° TEMPERATURE FOR MAXIMUM HARDNESS AND EXTERIOR DURABILITY.



**POLE DRILLING TEMPLATE**

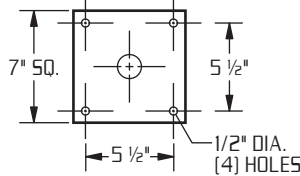


**WALL MOUNT**

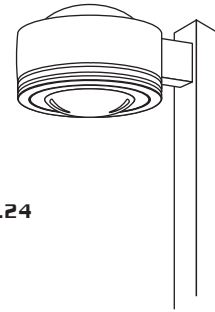


EXTRUDED ALUMINUM ARM AND CAST ALUMINUM WALL BRACKET ASSEMBLY PROVIDED WITH BUILT IN GASKETED WIRE ACCESS FOR FIXTURE/SUPPLY WIRE CONNECTION.

**WALL PLATE**



**LAMP SIZE:  
35 - 175 WATT**



E.P.A. = 1.24

**SIX LIGHT DISTRIBUTIONS AVAILABLE.**

**OPTICAL SYSTEMS ENCLOSED IN IMPACT RESISTANT TEMPERED GLASS LENS.**

**REFLECTOR IS FIELD ROTATABLE.**

**ORDERING INFORMATION**

MODEL NO. :	OPTICS	WATTAGE TYPE VOLTAGE	MOUNTING	FINISH	OPTIONS
RVL18					

MODEL NO. :	OPTICS	LAMP	MOUNTING	FINISH	OPTIONS
<b>R V L 1 8</b>	<b>VERTICAL LAMP REFLECTORS</b>	<b>WATTAGE TYPE VOLTAGE</b>	<b>ARM MOUNT</b>	<input type="checkbox"/> DARK BRONZE <b>DBM</b>	<input type="checkbox"/> FLAT TEMPERED GLASS..... <b>FG</b>
	<input type="checkbox"/> ASYMMETRIC <b>VR-ASY...</b> (segmented)	<input type="checkbox"/> 175 <input type="checkbox"/> HPS <input type="checkbox"/> 120	<input type="checkbox"/> 1 ..... ●	<input type="checkbox"/> MEDIUM BRONZE <b>MBM</b>	<input type="checkbox"/> CLEAR POLYCARBONATE DIFFUSER..... <b>LEX</b>
	<input type="checkbox"/> TYPE V <b>VR-V-SQ</b> (segmented)	<input type="checkbox"/> 150 <input type="checkbox"/> MH <input type="checkbox"/> 208	<b>STREET LIGHTING ARM MOUNT</b>	<input type="checkbox"/> BLACK <b>BKM</b>	<input type="checkbox"/> HOUSE SIDE SHIELD..... <b>HS</b>
	<input type="checkbox"/> TYPE II <b>HR-II.....</b> (segmented)	<input type="checkbox"/> 100 <input type="checkbox"/> MV <input type="checkbox"/> 240	<input type="checkbox"/> <b>ST23.....</b> ● (TO FIT OVER 2 3/8" O.D. ARM)	<input type="checkbox"/> WHITE <b>WTM</b>	<input type="checkbox"/> PHOTO CELL + VOLTAGE (EXAMPLE: PC120V)..... <b>PC+V</b>
	<input type="checkbox"/> TYPE III <b>HR-III.....</b> (segmented)	<input type="checkbox"/> 75 <input type="checkbox"/> 277	<b>ADJUSTABLE KNUCKLE</b>	<input type="checkbox"/> SILVER <b>SLM</b>	<input type="checkbox"/> TWIST LOCK PHOTO CELL+VOLTAGE (EXAMPLE TPC120V)..... <b>TPC+V</b>
<b>HORIZONTAL LAMP REFLECTORS</b>	<input type="checkbox"/> 70 <input type="checkbox"/> 480	<input type="checkbox"/> <b>NKLE23.....</b> ● (TO FIT OVER 2 3/8" O.D.)	<b>OPTION:</b>	<input type="checkbox"/> TWIST LOCK RECEPTACLE ONLY..... <b>TPR</b>	
<input type="checkbox"/> TYPE IV (FORWARD THROW) <b>HR-IV.....</b> (segmented)	<input type="checkbox"/> 50 <input type="checkbox"/> MT	<input type="checkbox"/> <b>NKLE27.....</b> ● (TO FIT OVER 2 7/8" O.D.)	<input type="checkbox"/> ANODIZED <b>AZ</b>	<input type="checkbox"/> SINGLE FUSE (120V. , 277V)..... <b>SF</b>	
<input type="checkbox"/> TYPE V <b>HR-V-SQ</b> (segmented)		<b>WALL MOUNT</b>	ANODIZED HOUSING MUST HAVE PAINT FINISH COAT EXAMPLE: <b>AZDBM</b>	<input type="checkbox"/> DOUBLE FUSE (208V. , 240V)..... <b>DF</b>	
		<b>MEDIUM BASE LAMP ONLY</b>	<input type="checkbox"/> <b>WM.....</b> ●		
			SEE ACCESSORIES SECTION FOR ST23 AND NKLE DETAILS		
				SEE PAGE 3 FOR ADDITIONAL COLORS	

