

H.I.D. CANOPY LIGHTING

CHM SERIES-HID

S P E C I F I C A T I O N S

HOUSING AND LENS FRAME

One piece, die formed aluminum construction. Aluminum door frame provided with spring loaded hinge and a spring loaded fastener for easy access. Closed cell EPDM gasketing compressed between door and housing seals optical chamber.

OPTICS

Semi-specular aluminum reflector combines with injection molded prismatic acrylic lens to provide shielded wide angle V light distribution. Lamp is horizontally mounted.

ELECTRICAL

All electrical components are UL and cUL recognized mounted on a single plate and factory prewired with quick-disconnect plugs. Electrical module attaches to housing with no-tool hinges and latches, accessible by opening the lens frame. Magnetic MH ballasts are high power factor (70W - 150W) or CWA (175W - 400W), -20°F starting, multi-tap 120-277V or 347V or 480V, 60Hz. All HPS ballasts are core and coil, high-reactance, high power factor (70W - 150W) or CWA (200W - 400W), -40°F starting. CHM-12 models utilize medium base (E26) sockets. CHM-20 models utilize mogul base (E39) sockets.

MOUNTING OPTION

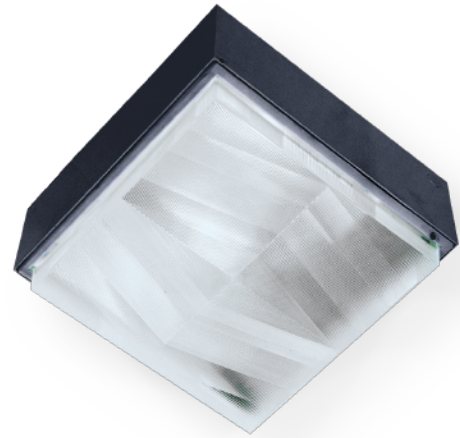
- CNP** - Cast aluminum canopy 1"X8"X10"
- SC** - Heavy wall aluminum surface collar 2 1/2"X8"X10" for surface conduit.

FINISH

Electrostatically applied TGIC Polyester Powder Coat on substrate prepared with 20 PSI power wash at 140° F. Four step iron phosphate pretreatment for protection and paint adhesion. 400°F bake for maximum hardness and durability. Texture finish is standard.

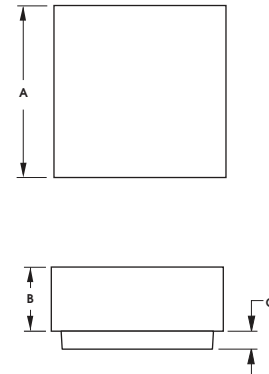
PROJECT NAME: _____

FIXTURE TYPE: _____



CHM

PATENT PENDING

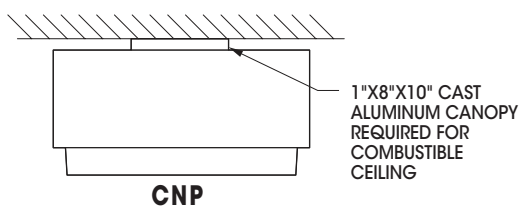


FIXTURE	A	B	C
CHM20	21.5" Sq. 546mm	8" 203mm	2.25" 57mm
CHM12	14" Sq. 356mm	7" 179mm	2.25" 57mm

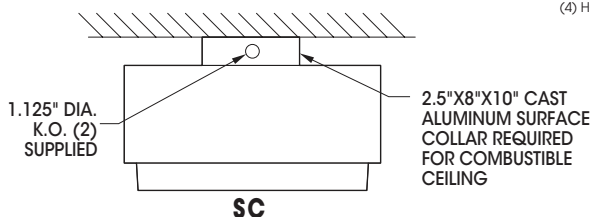
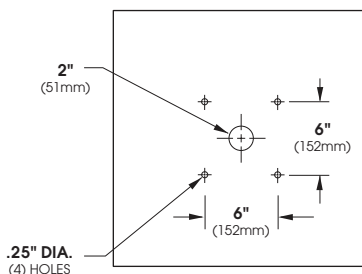
CHM SERIES - HID

S P E C I F I C A T I O N S

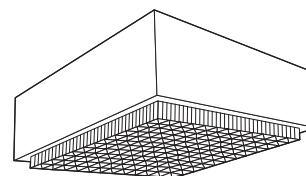
MOUNTING



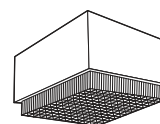
BACK SIDE



E.P.A. & LAMP WATTAGE



CHM-20
LAMP SIZE: 175 - 400 WATT



CHM-12
LAMP SIZE: 70 - 150 WATT

INJECTION MOLDED PRISMATIC REFRACTOR - ACRYLIC STANDARD.

HINGED GASKETED DOOR FRAME.

Spec/Order Example: CHM20-CA/400PSMH277/RAL-9005-T/PC+V

S P E C / O R D E R I N G I N F O R M A T I O N

MODEL	WATTAGE	TYPE	VOLTAGE	FINISH	OPTIONS
MODEL	LAMP			FINISH	OPTIONS
	WATTAGE	TYPE	VOLTAGE	STANDARD TEXTURED FINISH	
<input type="checkbox"/> CHM20-CA CLEAR PRISMATIC ACRYLIC (STANDARD) <input type="checkbox"/> CHM20-CP CLEAR PRISMATIC POLYCARBONATE	<input type="checkbox"/> 400 <input type="checkbox"/> 350 ^{1,2} <input type="checkbox"/> 320 ^{1,2} <input type="checkbox"/> 250 <input type="checkbox"/> 200 ^{1,2} <input type="checkbox"/> 175 ^{1,2}	<input type="checkbox"/> PSMH <input type="checkbox"/> HPS	<input type="checkbox"/> 120 <input type="checkbox"/> 208 <input type="checkbox"/> 240 <input type="checkbox"/> 277 <input type="checkbox"/> 347 <input type="checkbox"/> 480	<input type="checkbox"/> BLACK RAL-9005-T <input type="checkbox"/> WHITE RAL-9003-T <input type="checkbox"/> GREY RAL-7004-T <input type="checkbox"/> DARK BRONZE RAL-8019-T <input type="checkbox"/> GREEN RAL-6005-T	<input type="checkbox"/> #73 CRYSTAL TEMPERED GLASS . . . TPG <input type="checkbox"/> OPAL ACRYLIC DISH LENS OD <input type="checkbox"/> SINGLE FUSE (120V, 277V) SF <input type="checkbox"/> DOUBLE FUSE (208V, 480V) DF <input type="checkbox"/> QUARTZ RESTRIKE . . . PC+V <input type="checkbox"/> CANOPY CNP* <input type="checkbox"/> SURFACE COLLAR 2 1/2" X 8" X 10" SC*
<input type="checkbox"/> CHM12-CA CLEAR PRISMATIC ACRYLIC (STANDARD) <input type="checkbox"/> CHM12-CP CLEAR PRISMATIC POLYCARBONATE	<input type="checkbox"/> 150 <input type="checkbox"/> 125 ¹ <input type="checkbox"/> 100 <input type="checkbox"/> 70			FOR SMOOTH FINISH REPLACE SUFFIX "T" WITH SUFFIX "S" (EXAMPLE: RAL-9500-S) SEE USALTG.COM FOR ADDITIONAL COLORS	* -SC OR -CNP OPTION REQUIRED FOR COMBUSTIBLE CEILING APPLICATION.

1 - POSITION SENSITIVE LAMP
2 - PSMH ONLY