

SOLID STATE AREA LIGHTING

RWP SERIES - LED

Housing and J-Box

Corrosion resistant, durable cast aluminum (A356 alloy; <0.2% copper) construction. J-box is supplied with (4) 1/2" N.P.T conduit entries at (2) bottom and (2) sides. Powder coated for use in concrete.

Door Frame

Corrosion resistant, durable cast aluminum (A356 alloy; <0.2% copper) construction. Trapezoidal shaped outer contour aims the linear prismatic lens toward the illuminated surface. Door frame is secured to the housing by (4) captive, stainless steel screws. Gasket is high temperature silicone.

Optics

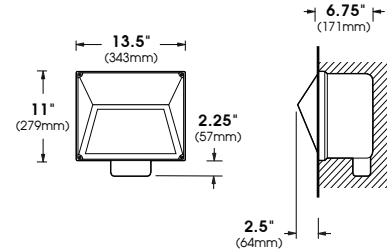
LED optical array, combines with a linear prismatic glass lens (min. 3/16" thickness) to produce symmetric and asymmetric (Left and Right) wide angle illumination in both up and down orientations.

LED Driver

Constant current LED drivers are UL and cUL recognized mounted on a single plate and factory prewired with quick-disconnect plugs. Drivers are electronic and have a power factor of >.90 and a minimum operating temperature of -40°F. Drivers accept an input of 120-277V, 50/60Hz. (Consult factory for dimming applications.)

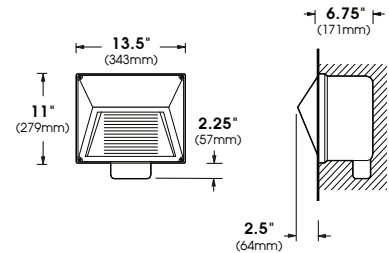
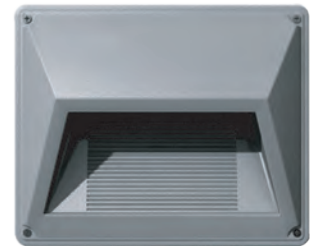
Finish

Super TGIC polyester powder coating is applied onto a metal substrate this has been pretreated with a four-stage process for maximum adhesion and color retention. The top coat is baked at 400° F for maximum hardness and exterior durability.



RWP

(Open Face)



RWP

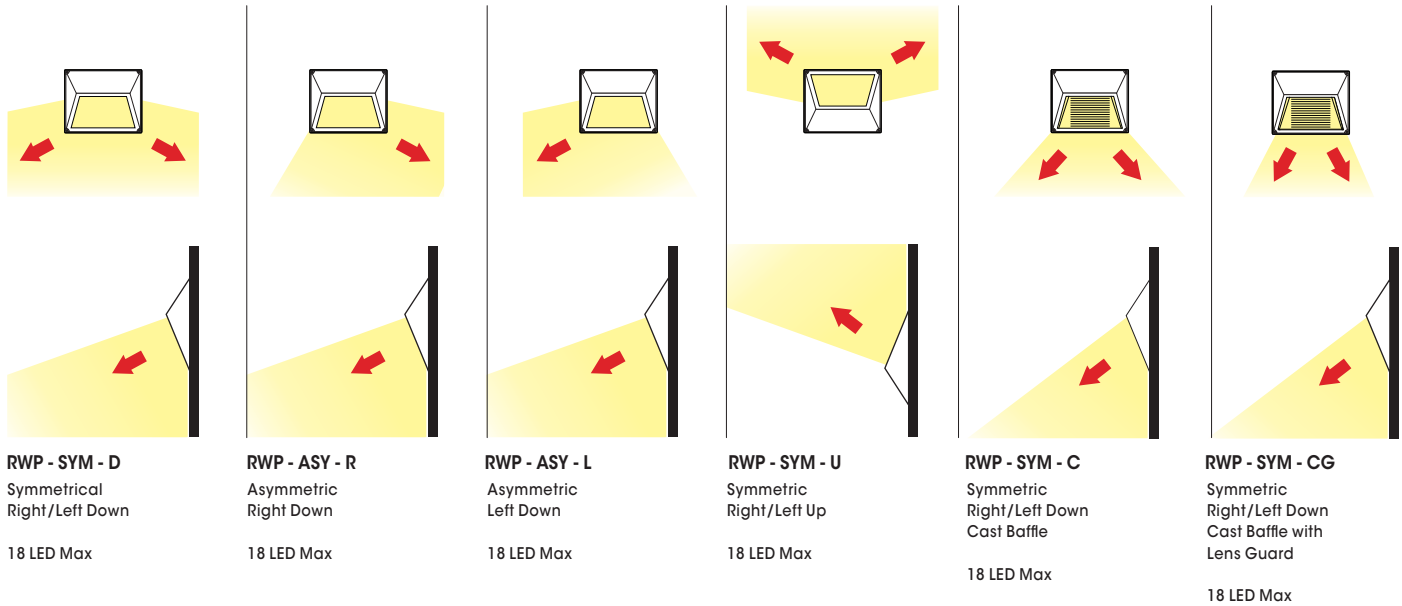
(Baffled Face)



2023348







SPECIFICATIONS

OPTICAL CONFIGURATION



ORDERING INFORMATION

Spec/Order Example: RWS-ASY-L/18LED/40K/UNV/RAL-7004/SF

Model / Face	LED Mode	Finish	Options
Model/ Face	LED	Finish	Options
<input type="checkbox"/> RWP - SYM - D  <input type="checkbox"/> RWP - ASY - R  <input type="checkbox"/> RWP - ASY - L  <input type="checkbox"/> RWP - SYM - U  <input type="checkbox"/> RWP - SYM - C  <input type="checkbox"/> RWP - SYM - CG 	No. LEDs <input type="checkbox"/> 18LED Color Temp - CCT <input type="checkbox"/> NW (4000K)* *STANDARD <input type="checkbox"/> CW (5000K) <input type="checkbox"/> WW (3000K) <small>Consult factory for other CCT, CRI, & Drive Current options</small>	Standard Textured Finish <input type="checkbox"/> Black RAL-9005-T <input type="checkbox"/> White RAL-9003-T <input type="checkbox"/> Grey RAL-7004-T <input type="checkbox"/> Dark Bronze RAL-8019-T <input type="checkbox"/> Green RAL-6005-T Premium Finishes <input type="checkbox"/> Rust <input type="checkbox"/> Patina Copper PC <small>For smooth finish replace suffix "T" with suffix "S" (Example: RAL-9500-S)</small> <small>Consult factor for custom colors</small>	<input type="checkbox"/> 10KV Surge Protector 10SP <input type="checkbox"/> 20KV Surge Protector (277V & 480V only) 20SP <input type="checkbox"/> Single Fuse (120V., 277V) SF <input type="checkbox"/> Double Fuse (208V., 240V) DF